

#### Product Features

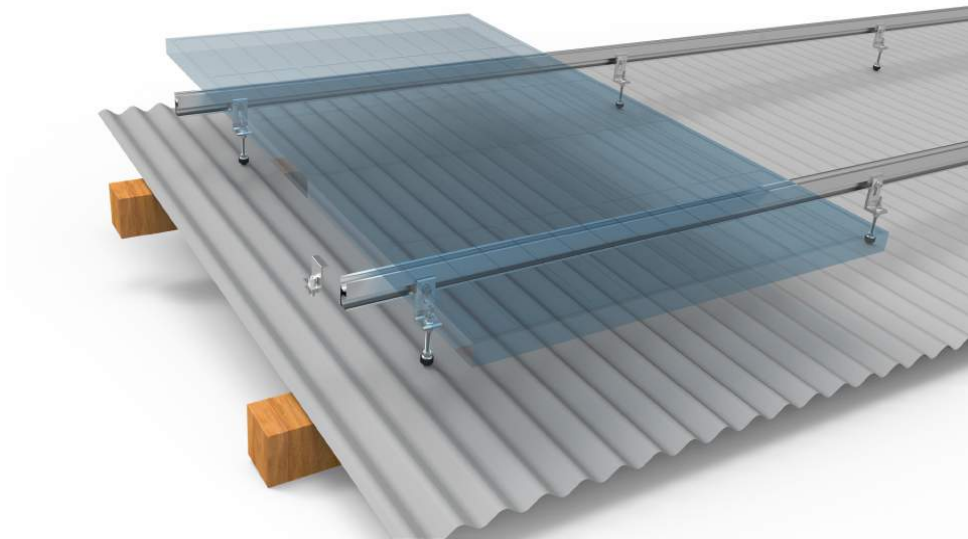
- Widely used for both crystalline and thin film module .
- Easy & quick installation.
- Only 3~4 kinds of components and no more than two kinds of tools in whole system fixation.
- All system components are made with high quality aluminum & stainless steel.

#### Technical Data

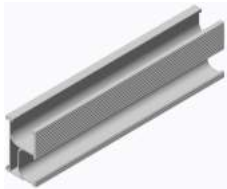
Project site	Metal sheet roof
Slope of roof	Up to 60°
Max Building Height	Up to 20m
Wind Load	60m/s
Snow Load	1.4kn/ m <sup>2</sup>
Applicable Module	Frame / frameless module, crystalline/ thin film module
Module Orientation	Landscape or portrait
Standard	AS/NZS 1170
Material	Stainless steel 304, Al6005-T5



System Overview



Key Components



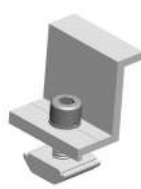
GS Rail



Rail Joiner Kit



Module Clamps



Hanger Bolt

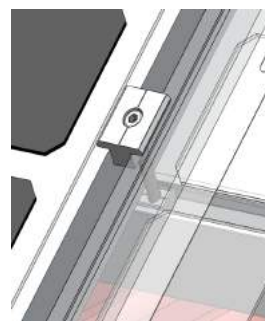
Installation



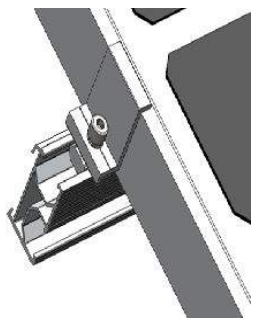
Fix Hanger bolts on the roof sheets, make sure the rubber pads are not broken.



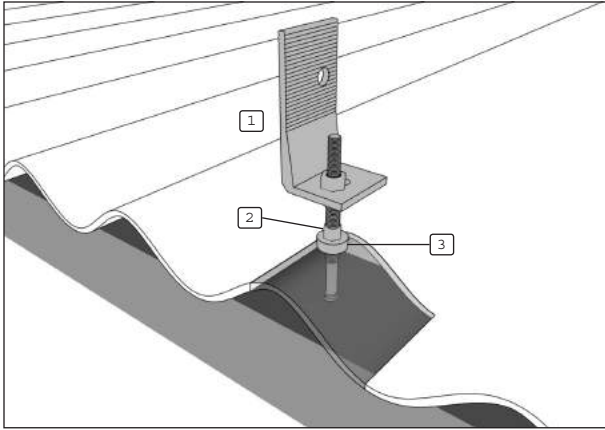
Fix the mounting rails to hanger bolt hooks with GS Clip or T-bolt.



Fix the modules on the mounting rails by mid clamps and end clamps.



## Installing hanger bolts



- 1 Hanger bolt with L-bracket
- 2 Sealing washer
- 3 Nut



### CAUTION

#### Leak damage

Inappropriately attached hanger bolts can cause leakage.

| Never position hanger bolts in the valleys of corrugated panels.



### CAUTION

#### Observe minimum edge distances

Hanger bolts attached too close to the edges of purlins can rip out.

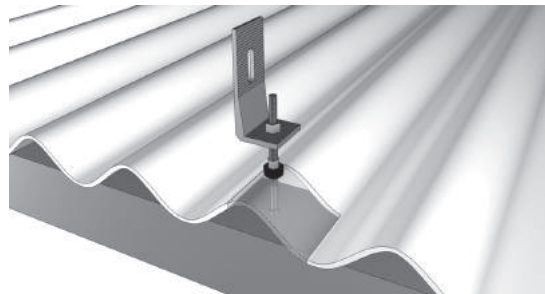
| Maintain a minimum distance of one-half the bolt diameter to the edge of the purlin when installing hanger bolts.

| Predrill holes when using bolts with a diameter > ¼ in / 6mm.

## Installation:

- | Drill through the roof cladding at the planned location.
- | Screw the hanger bolts into the purlins.
- | Press the sealing washer and flat washer onto the drill hole and secure it with the nut. Do not deform the panel. The tightening torque depends on the type of roof sheeting.

## Different installation on eternit corrugated roofs



In the case of eternit corrugated roofing, hanger bolts are used instead of roof hooks. Drill through the roof cladding at the planned location and screw the hanger bolts into the purlins. The hole must always be drilled at the peak of the corrugation. Then mount the L brackets.



Cross-section of a hanger bolt installation. Take special care that the nut tightly fastens the sealing washer without damaging the roof cladding. During installation, please ensure that the thread of the hanger bolt does not cover the long hole in the L-bracket.